

Boutique London Lets

London, in style!

Who are *Boutique London Lets*?

Boutique London Lets strive to provide 5 star accommodations within the comfort and convenience of centrally located London apartments.

At **Boutique Lets**, our apartments provide more amenities, space and comfort, than a hotel – but at cheaper rates! Our apartments offer two bedrooms, fully functioning kitchens, and comfortable lounge rooms allowing you to discover London without compromising on lifestyle or comfort. Our apartments can accommodate up to six people (some restricted to four) in utmost comfort.

All **Boutique** apartments cater for a broad range of size and budgetary requirements. All our apartments are centrally located and are chosen with locality, convenience, high interior standard and security in mind. As with standard hotels, **Boutique** apartments can be booked on a two nightly, weekly or even monthly basis. We cater equally for tourists (groups or families) and short-to-medium term corporate lets.

Please visit our website for more details: www.boutiquelondonlets.com

Fabulous accommodation:

Each of our properties offers the best value and quality of accommodation possible: We ensure that each apartment offers premiere:

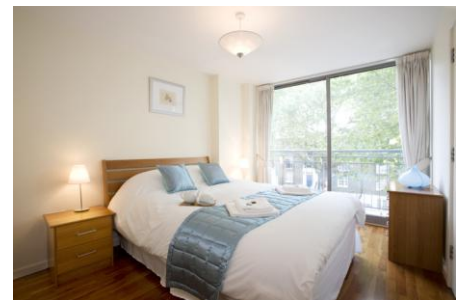
- Touristic location (centrality, access to transport and activities)
- Immediate environment (quality of building, street, neighbours)
- Internal layout, size and decorative quality
- Presentation and comfort – including furnishings and décor
- Safety and security

All apartments are modern, stylishly decorated and offer:

- Fully furnished accommodation.
- Living room, dining area, fully equipped kitchen & two bathrooms.
- Complementary high-speed internet access
- All bedding, towelling, quality linen & basic toiletries provided
- Washing machine, clothes aired, dishwasher & soaps provided.
- Very conveniently located for transport (tube and busses) and set in the heart of Central London.
- Full central heating and (limited flow) hot-water day and night.
- Very quiet and tranquil locations within the centre of London.
- 24 hour a day arrival and departure facility.



The St James' Apartment Kitchen



The Waterloo Apartment bedroom

Boutique London Lets

London's short-stay apartment specialists

www.boutiquelondonlets.com



Boutique London Lets

London, in style!

The Thames View apartment – at a glance:

No. of bedrooms:	Two double (queen size beds).
Other:	Two bathrooms (1 x en-suite), separate kitchen, living room (dining included).
Size:	710sqft / 66sqm
Underground, rail and bus station:	Vauxhall station: 50 meters away.
Close to:	River Thames, Houses of Parliament (Big Ben) and Buckingham Palace, Southbank, Royal Festival Hall, Tate Britain.
Internet Access:	Yes – broadband (WiFi).
Décor:	Excellent.
Furnishings:	Contemporary, fully furnished.
Further guests:	Sleeps 6 guests max
Location:	SW8 2LQ (refer to Google maps.co.uk)
Smoking?	No smoking in apartment or building.

The Thames View Apartment offers luxurious and spacious modern accommodation. The building is located in historic Vauxhall, close to where London's first ever bridge was built; over 3,000 years ago. The apartment boasts unspoilt floor-to-ceiling window views over the enchanting River Thames. From the comfort of your chic living room you can see across to such iconic landmarks as the Houses of Parliament ('Big Ben'), the London Eye, historic Westminster and the mysterious MI6.

The innumerable attractions of Westminster (Big Ben, Westminster Abbey and Buckingham Palace) & Southbank (London Eye, Shakespeare's Globe and Royal Festival Hall) are just a short walk away. Vauxhall Station is also on the doorstep (50 metres away) which provides superb transport (train, tube (subway) & bus) to all parts of London.

The decor and furnishings are of the highest quality and offer everything one could desire in making your stay in one of the greatest cities truly spectacular. Free high-speed Internet, flat screen TV/DVD, and designer furniture. There is a modern open-plan kitchen, fully equipped for entertaining. The Thames View apartment offers unrivalled accommodation in a fabulous position. Few places offer a private view overlooking the Thames River! This is perfect for the discerning traveller or business person.

Thames View indicative rates (per night):

2-3 nights: £246.50

4-7 nights: £211.50

8-13 nights: £192.50

2-4 weeks: £180.25

5+ weeks: from £138.50!

Nightly supplement (over 4 guests): £20 per person per night

NOTE: Prices shown are base prices. Levies may apply during peak seasons & holidays, discounts may apply in low seasons. Minimum night restrictions may also apply.



Boutique London Lets

London's short-stay apartment specialists
www.boutiquelondonlets.com

Boutique London Lets

London, in style!

Thames View Apartment Photos:

This is one of our newer properties, we are awaiting our professional photos. Here are some indicative photos and inspiring photos of the location for your reference. We can forward you the new photos as soon as they are available on request.



Sensational views



Prestigious apartment complex



Fabulous bathroom facilities



Main bedroom with en-suite



Set in a stunning period conversion



Fully equipped kitchen



The second bedroom



The River bank at night



Apartment lobby



Boutique London Lets

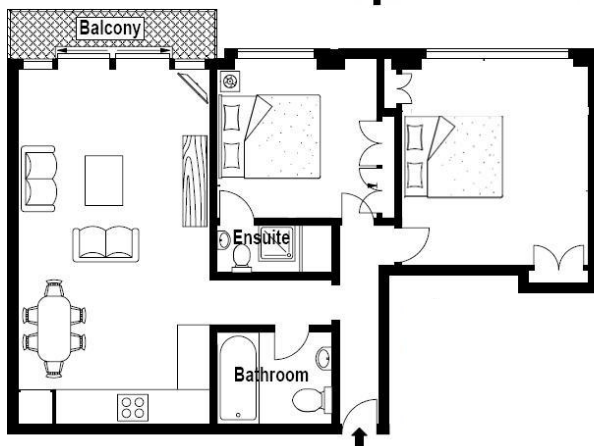
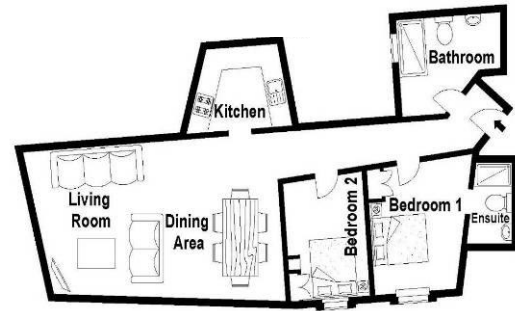
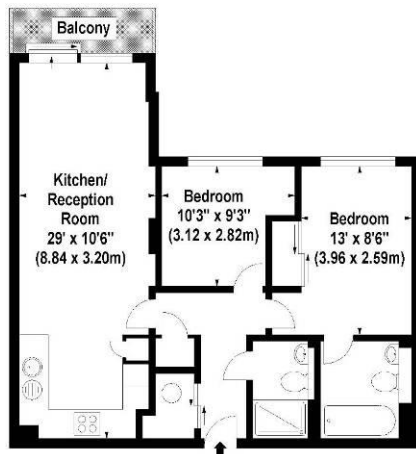
London's short-stay apartment specialists
www.boutiquelondonlets.com

Boutique London Lets

London, in style!

The Thames View apartment floor plan:

All of our apartments have floor plans, so our guests know exactly where they are staying. We are awaiting the production of the floor plan for this particular apartment. We have provided floor plans for similar apartment as an indication of size and space.



The Thames View apartment contains:

- Two double bedrooms
- Two bathrooms (1 en-suite)
- Very Central London Location
- Minimum of 65sqm in size
- Fully equipped kitchen
- Only 50 meters from Vauxhall station

Boutique London Lets

London's short-stay apartment specialists

www.boutiquelondonlets.com



Boutique London Lets

London, in style!

Optional Extras:

We offer a range of optional services to make your stay more enjoyable and convenient.

-Out of hour's arrival:

For your convenience key delivery and pick-up is a personalised service. Between 5am-10pm (Mon – Sun) this is complimentary, there is a small charge out of these hours of **£50**. Please advise us of your arrival time on booking (can be paid afterward if unsure).

-House keeping services:

Guests can request to have the apartment cleaned and all linen changed during their stay. Please allow 48hrs notice to arrange: **£50**

-Cot for baby:

A high quality fold-out cot for your baby and highchair. **£5 per night**

-Fold-out beds (extra guests):

There is a very comfortable fold out bed available. There is a maximum of four people allowed in this apartment. However, if a group of four or less people require another bed, then they can hire this. The bed comes with necessary linen and towels. Please advise us if you wish to use this in advance. **£15 per person per night (groups under 4)**.

-Early check-in or late check-out:

Later check-outs or earlier check-ins can be arranged subject to availability. See below for details. There is a partial stay fee applicable of **£75 per request**.

Please let us know when booking if you require any of these services.

Prices are subject to change – please enquire at time of booking.



Boutique London Lets

London's short-stay apartment specialists
www.boutiquelondonlets.com



Boutique London Lets

London, in style!

Booking details, terms and conditions:

Check-in and check-out:

Check in time: from 2.30pm
Check-out time: before 10.00am

- **Check in time: FROM 2.30pm – no prior luggage drop-off or storage available.**
Due to the nature of our apartments, you **may not** arrive at the apartment earlier than the arranged check-in time. This includes for luggage drop-off purposes.
- **Early check-in option: EXTRA PAYMENT REQUIRED (booked in advance).**
If you wish to check-in **before 2.30pm but after 10.00 am**, please advise us at the time of booking. **An additional charge of \$75 applies. If you desire to arrive any earlier than 10.00 am you will need to pay the full tariff for the next night.** We will strive to accommodate you subject to availability – this must be booked in advance.

Early check-ins must be approved and paid for at time of booking. We are unable to accommodate last minute early check-in requests. We are unable to store luggage prior to check-in.

- **Check –out time IS 10.00am – no luggage storage available after departure.**
We ask that you vacate the apartment promptly as our cleaners will require the apartment empty in preparation for the next guest.
- **Late check-out option: EXTRA PAYMENT REQUIRED (booked in advance).**
If you wish to check out **after 10.00am and before 6pm**, please advise us at the time of booking. **An additional charge of £75 applies. If you desire to stay any later than 6pm, you will need to pay the full tariff for the next night.** We will strive to accommodate you subject to availability – must be booked in advance.

Late check-outs must be approved and paid for at time of booking. We are unable to accommodate last minute late check-out requests. We are unable to store luggage after check-out.

Booking reservations and payments:

- Bookings must be reserved with a 20% deposit.
- The **full outstanding amount must be paid TWO weeks prior to arriving** at the



Boutique London Lets

London's short-stay apartment specialists
www.boutiquelondonlets.com



Boutique London Lets

London, in style!

apartment. The guest is liable for a £40 late payment fee and/or cancellation of their booking if full payment is not received before this time.

- A security deposit of £200.00 is required from all guests. We only take authorisation for this payment and no funds are debited from your account, unless necessary. This is automatically cancelled after checkout after a satisfactory inspection of the apartment/unless in the unlikely event of damage sustained during a guest's stayed.

Payment options:

Payment is accepted only via Google Checkout (2% transaction fee applies). To pay by Google Checkout, we shall email you an invoice from which you can pay easily and securely online. It is a very simple, safe and efficient payment method.

Cancellations:

The 20% booking deposit is non-refundable. The 80% full balance payment is due **TWO WEEKS** before arrival. Feel free to pay the full balance at any time. We reserve the right to cancel your booking if we do not receive full payment two weeks prior to arrival. The full balance will be forfeited if you cancel **only within TWO WEEKS** of arrival. If you cancel before this time, the 80% balancing payment will be refunded.

Luggage Storage:

Unfortunately we provide no luggage storage service either before or after your stay. Due to the nature of the apartments, we do not have access to communal areas or lobbies. Therefore we have no ability to store any of your luggages outside of your booked stay.

Booking price and quote policy:

We reserve the right to change advertised prices without notice. Existing quotes will be honoured under these circumstances. **If you book your apartment, then the price that you have done so at is the price that you will pay** – regardless of future price movements.

Property locations:

If you wish to view the property location on a map, please enter the postcode of the property (see above) into Google Maps UK: www.maps.google.co.uk.

Contact information:

Please email us or visit our website for more details:

Email: info@boutiquelondonlets.com

Web: www.boutiquelondonlets.com



Boutique London Lets

London's short-stay apartment specialists

www.boutiquelondonlets.com