

City – Studio, 1 & 2 bed – EC2

This fantastic **new block of 9 apartments** offer contemporary design, high quality furnishings and an array of apartment services to make your stay in the heart of London's financial district a memorable one.

We offer a selection of studio, one and two bedroom apartments with excellent bathrooms, fully equipped kitchens, wooden flooring and interior designed rooms which have been specifically **tailored to the highest standards.**

Located in a prime position, only a stone's throw from Liverpool Street station. This is the heart of the City of London. The City serviced apartments provide the business traveller and leisure guest the best of both worlds.

A wealth of apartment amenities including welcome hamper, free high-speed WiFi internet, 24/7 meet and greet and many more are available

A snapshot

Bedrooms	Studio, one- and two-bedroom apartments available
Amenities	Modern bathroom, fully-equipped kitchen, open-plan living room (dining included)
Size	245sqft - 850sqft / 22sqm - 77sqm
Transport	Liverpool Street Station 50 metres away. Bank of England, St Paul's Cathedral, Fleet Street, Spitalfields Market, Monument & the City.
Close to	
Internet	Complimentary high-speed broadband (WiFi).
Capacity	Studio: 2 people; one-bed: 3 people; two-bed: 4 people max.
Location	EC2M 4NQ (refer to Google maps.co.uk)
Smoking	No smoking in apartment or building



City living
within
chic
modern
surrounds

Boutique London Lets

See all photos online!

City - studio, 1 & 2-beds brought to you by Boutique London Lets



Perfect for business, great for pleasure

Book online, email or call us. We have apartments throughout central London and offer studios, one-, two- and three-bedroom options.

Price guide

	Studio		One-bed		Two-bed	
	Low:	Peak:	Low:	Peak:	Low:	Peak:
2-3 nights:	£98.75	£131.65	£141.05	£188.05	£184.87	£246.50
4-7 nights:	£85.90	£114.55	£122.70	£163.65	£160.84	£214.45
8-13 nights:	£78.95	£105.30	£112.85	£150.45	£147.90	£197.20
2-4 weeks:	£72.20	£96.25	£103.15	£137.55	£135.19	£180.25
5+ weeks:	£68.15	£90.85	£97.35	£129.75	£127.56	£170.09

Nightly supplement: **£20** per person per night

Early check-in / Late check-out – pending availability: **£75**

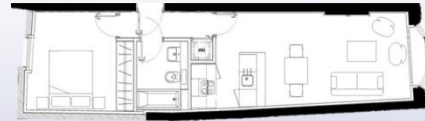
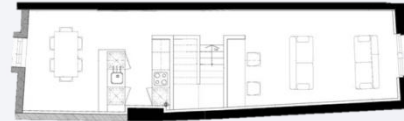
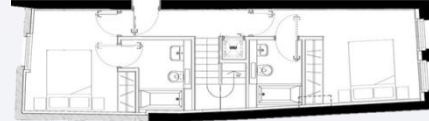
Extra clean, linen and towel change: **£50**

Extra services available – see website for details.

NOTE: Rates shown are indicative prices only. Prices fluctuate depending on season & demand. Minimum stay lengths may also apply. All prices include VAT & taxes. Full booking terms & conditions on website. Corporate rates available.



See our website for best available rates. There's walk-through videos, maps, Trip Advisor reviews, London tips, photos & more.



City Apartments:

Two-bed split-level:
77sqm

One-bed:
36-47sqm

Studio:
22sqm

